



Hiking Tour

+94 769215459
+94 704433913

Day 01 - Airport to Negombo

Welcome to Sri Lanka. At the airport, you will be greeted by both our Overseas representative and guide who will take you into Negombo. It is a romantic little coastal town with wide sandy beaches and a safe sea coastal area. You can enjoy the rest of the day at leisure to relax and unwind and enjoy Negombo nightlife. Our guide will lead you to some of Negombo's curious sites.

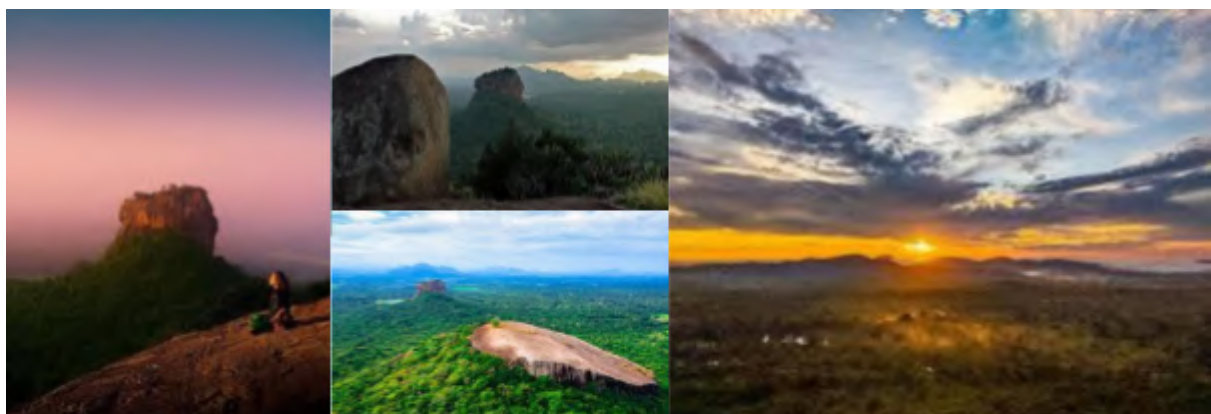
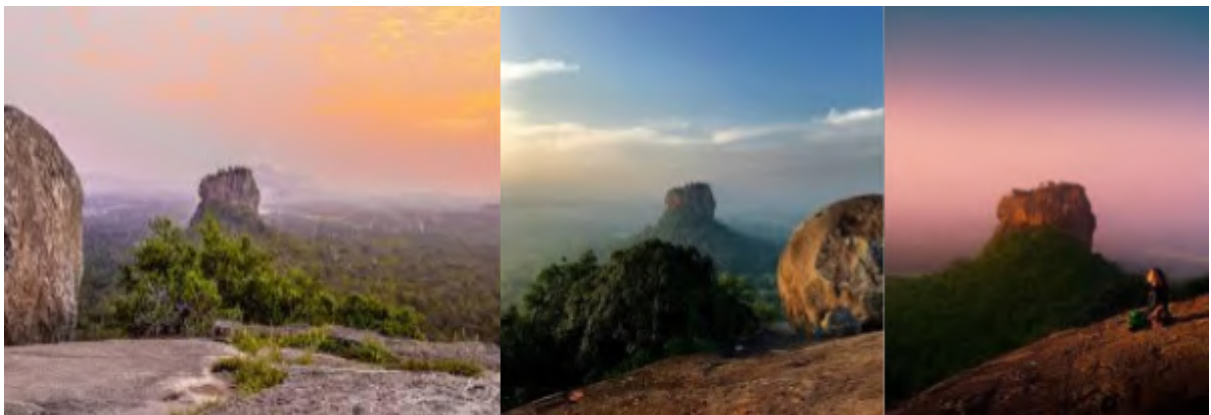
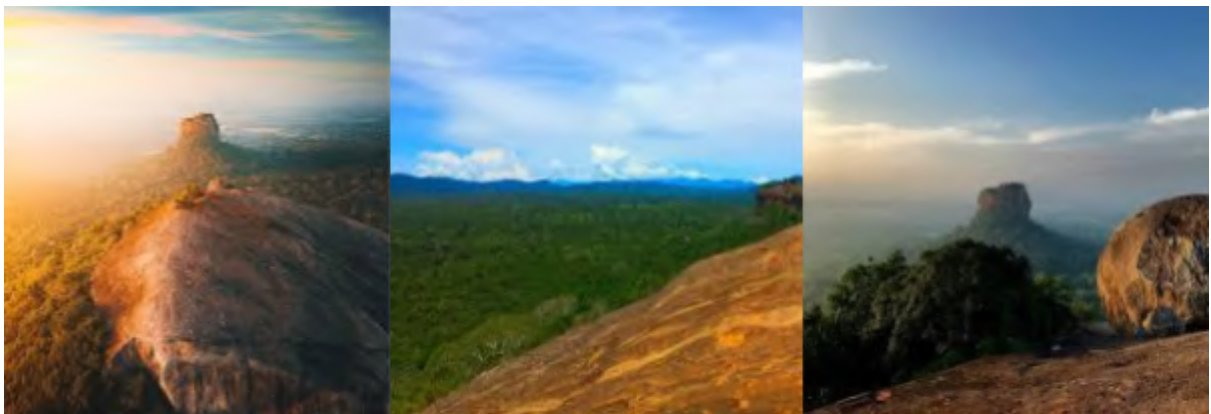
- Checking to the hotel and leisurely spend the day at Negombo beach.
- Overnight stay in Negombo



Day 02 - Sigiriya (pidurangala)

Pidurangala is a rock formation located near Sigiriya in central Sri Lanka. It's famous for Pidurangala Rock, a neighboring but distinct formation from the iconic Sigiriya Rock. Climbing Pidurangala Rock offers stunning panoramic views of Sigiriya and the surrounding landscape. The hike to the top involves a mix of rock surfaces and a short climb, and it's particularly popular for sunrise or sunset excursions. Visitors often choose to combine a visit to Sigiriya with a trek to Pidurangala to enjoy both historical and natural perspectives of the region.

- Stay at a hotel in Sigiriya



Day 03 - Kandy

Kandy is a picturesque city located in the central hills of Sri Lanka. Known for its rich history, cultural significance, and stunning landscapes, Kandy is a popular tourist destination. The city is home to the Temple of the Tooth Relic, a UNESCO World Heritage Site, which houses a sacred tooth relic of Buddha. Visitors can explore the vibrant local markets, enjoy scenic views of the Kandy Lake, and witness traditional Kandyan dance performances. The lush greenery, cool climate, and historical sites make Kandy a must-visit destination for those exploring Sri Lanka.

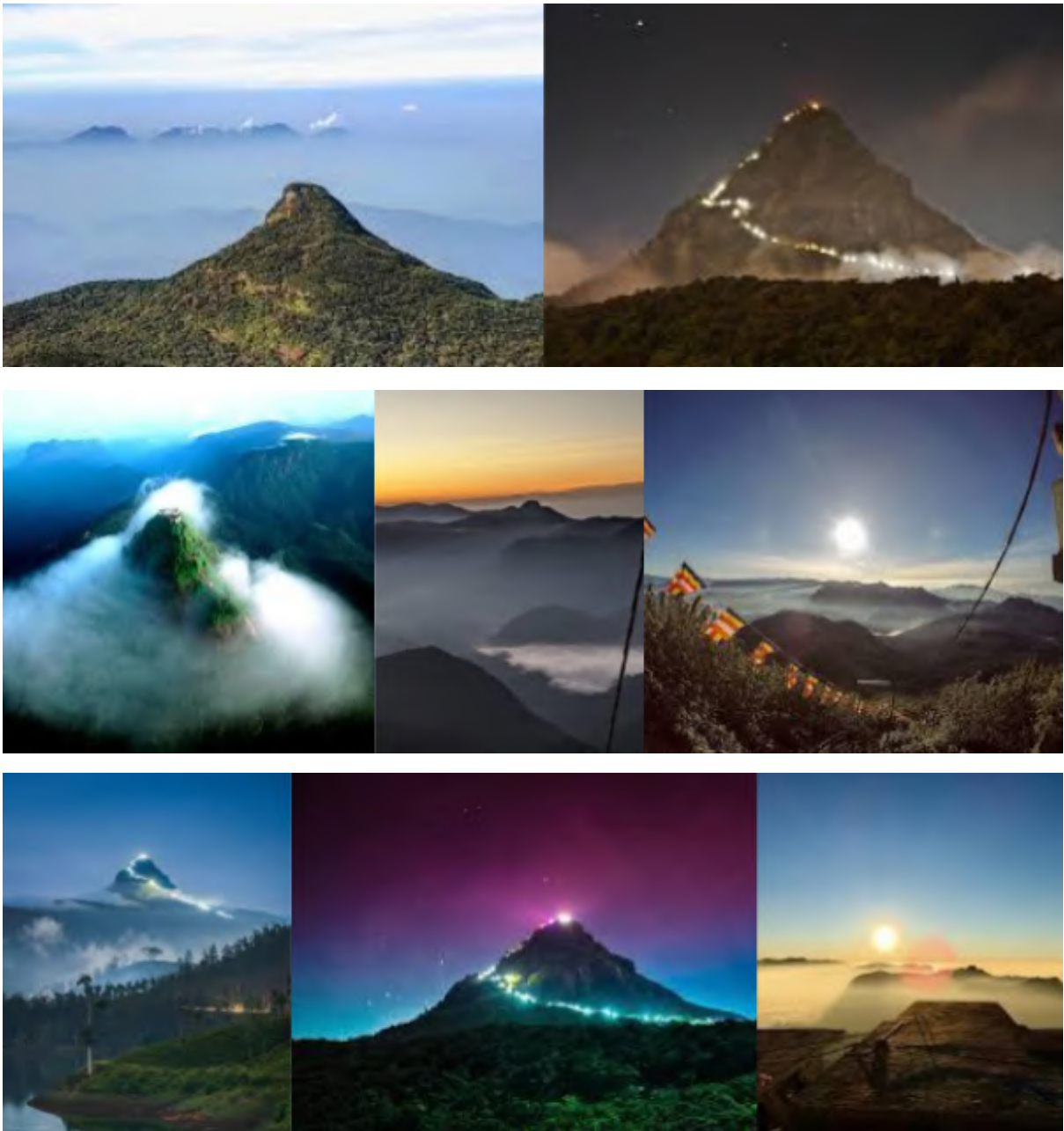
- Visit Spices & Herbal Garden in kandy
- visit Temple of the tooth
- Peradeniya Botanical Garden
- visit Gem Museum
- Enjoy Cultural Show
- Overnight stay at the hotel in Kandy.



Day 04 - Adam's peak

Adam's Peak, also known as Sri Pada, is a sacred mountain in central Sri Lanka. Rising to an elevation of 2,243 meters (7,359 feet), it is a prominent pilgrimage site for multiple religious communities. The peak is famed for the "Sri Pada" or "Sacred Footprint," a depression at its summit believed to be the footprint of Buddha by Buddhists, Lord Shiva by Hindus, and Adam by Muslims and Christians. The pilgrimage season typically runs from December to May when thousands of devotees climb to the summit to witness the breathtaking sunrise and pay homage to the sacred site. The climb is characterized by a series of steps and offers stunning views of the surrounding mountains and landscapes.

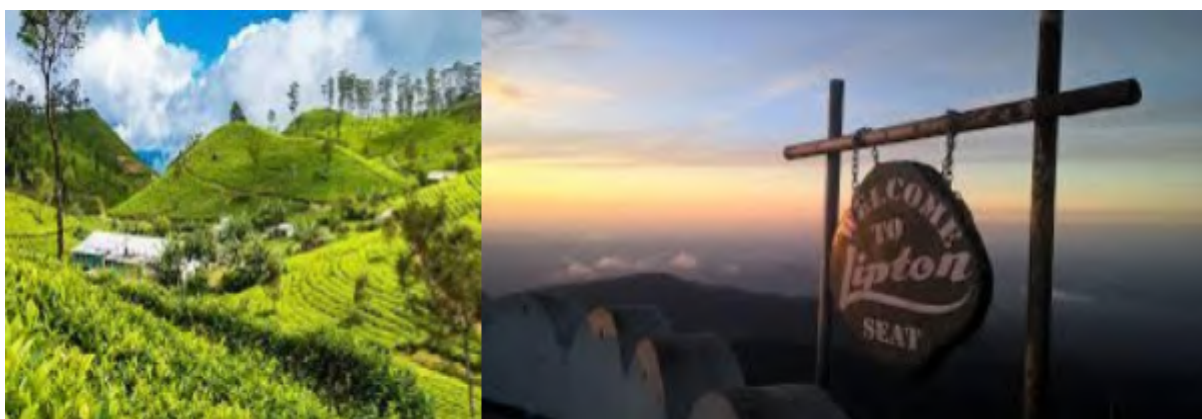
- Overnight stay at the hotel in Adam's peak



Day 05 - Haputale (Lipton seat)

Haputale is a charming hill town situated in the Badulla District of Sri Lanka. Perched at an elevation of around 1,431 meters (4,695 feet), Haputale offers breathtaking views of the surrounding tea plantations and lush green landscapes. Known for its pleasant climate and scenic beauty, it serves as a gateway to the stunning hill country of Sri Lanka. Visitors to Haputale can explore the picturesque Dambatenne Tea Factory, hike through the scenic Haputale Gap, and enjoy panoramic vistas from places like Lipton's Seat. The town provides a tranquil and idyllic setting, making it a popular destination for those seeking a peaceful retreat in the midst of Sri Lanka's scenic hills.

- Tuk Tuk safari and Picnic in The Tea Plantation from Ella,Haputale & Bandarawela. ...
- Lipton's Seat and Tea Factory,Trail Amidst Tea Plantation Day Tour. ...
- Lipton's Seat View Point from Ella. ...
- Ella Hotel to Lipton Seat Transfers. ...
- Lipton's Seat and Dambatenne Tea Factory Day Tour From Ella. ...
- Glorious Ceylon
- Overnight stay at the hotel in Haputale

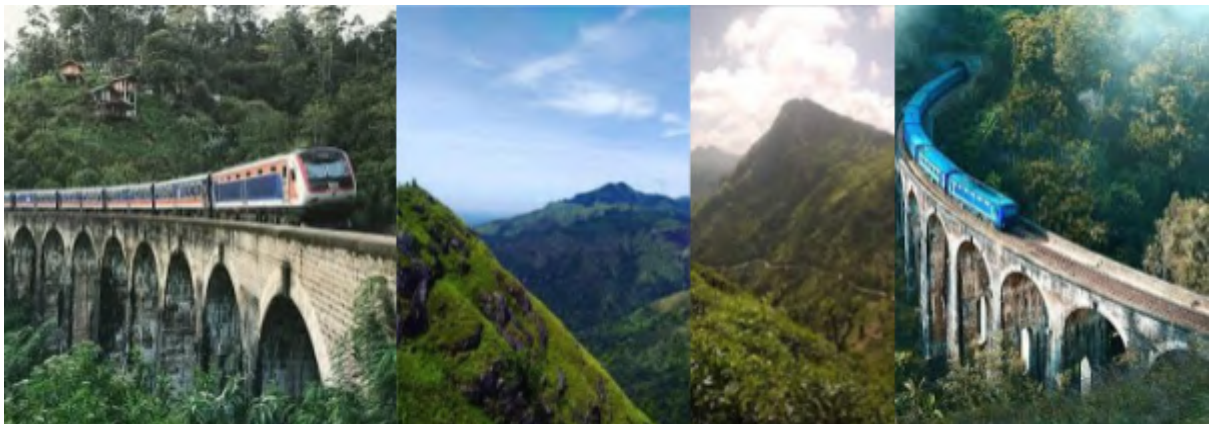


Day 06 - Ella

Ella is a picturesque town situated in the central highlands of Sri Lanka, known for its stunning landscapes and pleasant climate. Surrounded by lush green tea plantations and rolling hills, Ella offers breathtaking views of the countryside. The town itself is small but vibrant, with a relaxed atmosphere. Ella is famous for its iconic landmarks, including the Ella Rock, which provides panoramic views of the Ella Gap. The Nine Arch Bridge, an architectural marvel surrounded by scenic greenery, is another popular attraction. The area is also renowned for its hiking trails, waterfalls like Ravana Falls, and the soothing vibes of the countryside.

Travelers often visit Ella to enjoy nature walks, explore tea estates, and experience the laid-back charm of the town. It has become a favored destination for those seeking tranquility, natural beauty, and outdoor activities in the heart of Sri Lanka's hill country.

- The Nine Arch Bridge
- Ravana Falls
- Overnight stay in Ella



Day 07 - Mirissa

The entire south coast is basically a string of stunning white sand beaches with crystal clear waters and palm trees towering above.

- Parrot rock.
- Coconut tree hill.
- Go whale & dolphin watching.
- Relax on Mirissa Beach.
- Chill out in one of the beach bars.
- Stay night in Mirissa.



Day 08 - Departure

- After breakfast proceed to the airport
- As all good things must come to an end, your guide will comfortably take you back to the international airport to end your pleasant journey

